



BA-PHALABORWA MUNICIPALITY
MEMORANDUM
- BUDGET AND TREASURY –

TO : *Prospective Service Provider*
FROM : *SCM/STORES*
DATE : *17/09/2019*
ENQUIRIES : *STORES*
TELEPHONE : *015 780 6362/61*
REF : *135964*

Kindly furnish this office with a written quotation for supply of goods/ services as detailed below. The quotation must be submitted on the letterhead of your Business and Brought to our offices 3 Nyala Street, Phalaborwa not later than **26/09/2019 at 12HOO**

QUANTITY	Description	PRICE/UNIT (Inc .VAT)	DELIVERY PERIOD
6	Supply VIP concrete toilet structure (2048mmx970mm) normal, Pre-cast.		
1	VIP Pre-cast concrete toilet structure (Disabled)		
	See specification below:-		

Please number your quotes (Your Ref no)

The following conditions will apply:

- *Price (s) quoted must be valid for at least thirty (30) days from date of your offer.*
- *The municipality retains the prerogative to reject any quotes it deems to be excessive*
- *A firm delivery period must be indicated.*
- *Tax Clearance Certificate*
- *A service provide be registered with central supplier database (CSD)*
- *Registered with CIPRO (CK 1 or 2 document)*
- *BBBEE Certificate certified by a SANAS accredited institution.*
- *Completed MBD4 (Declaration of Interest) Form*

Fill in and Return the Declaration of Interest Form.



BA-PHALABORWA MUNICIPALITY
MEMORANDUM
- BUDGET AND TREASURY –



BA-PHALABORWA MUNICIPALITY
MEMORANDUM
- BUDGET AND TREASURY –

VIP PRE-CAST CONCRETE TOILET STRUCTURE (NORMAL)

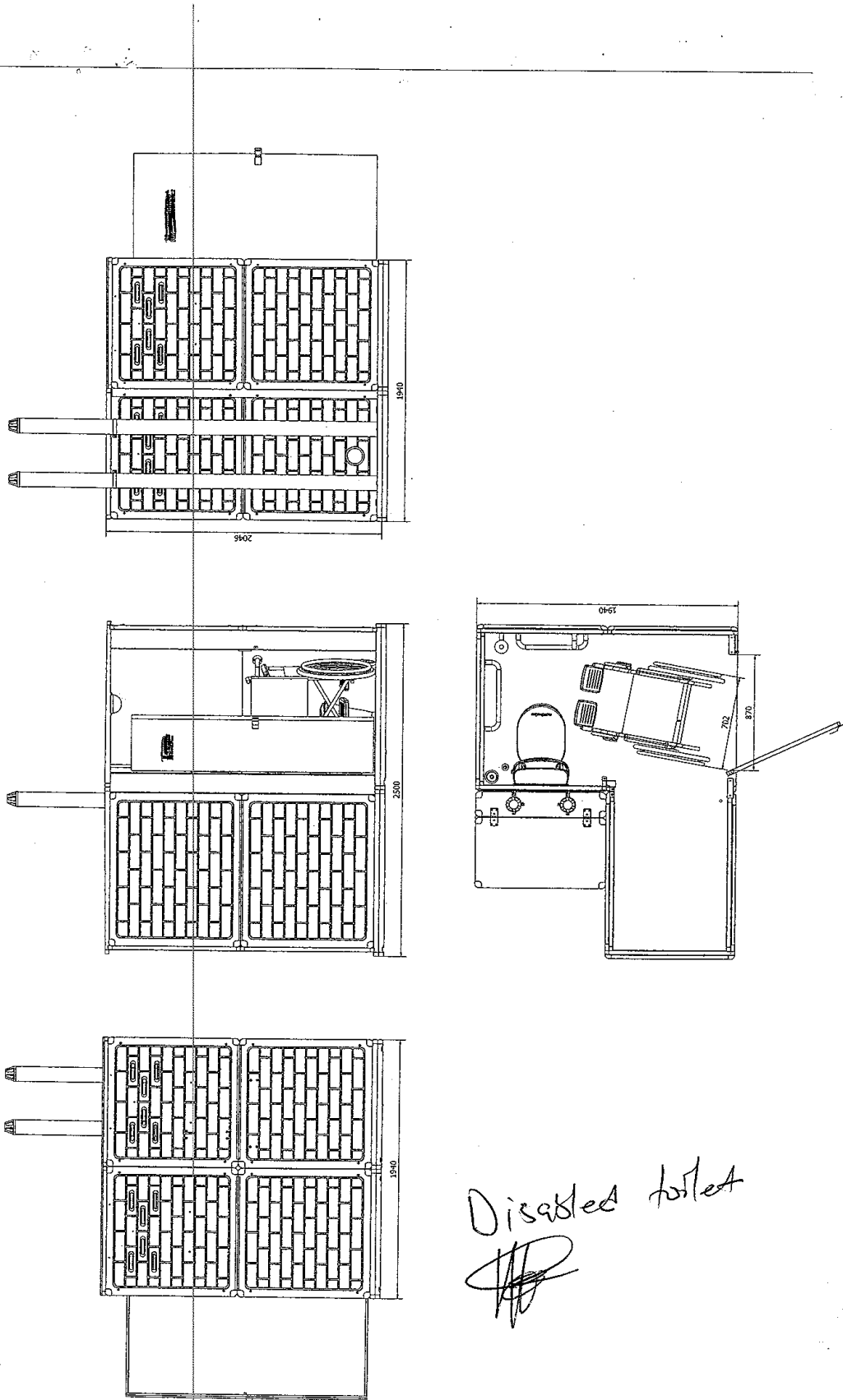
- Base Slab (Floor) X 2
- Concrete back, side and roof panels
- Stainless Steel Door
- Accessories, fittings and screws for assembly
- 2.7 m Black U.V. resistant Double vent pipes with cowl and gauze
- Pedestal with seat and lid
- Toilet Brush with cup holder.
- Squeeze Bottle for Pedestal Cleaning
- Ecological manifold pipe system
- Separator
- Reservoir. (Water Tank).
- Cistern with flushing facility.
- Hand Wash Basin.

VIP PRE-CAST CONCRETE TOILET STRUCTURE (DISABLED)

- Base Slab (Floor) X2
- Concrete back, side and roof panels
- Stainless Steel Door
- Accessories, fittings and screws for assembly
- 2.7 m Black U.V. resistant Double vent pipes with cowl and gauze
- Pedestal with seat and lid
- Toilet Brush with cup holder.
- Squeeze Bottle for Pedestal Cleaning
- Ecological manifold pipe system
- Separator
- Grab Rails
- • Reservoir. (Water Tank).
- • Hand Wash Basin.
- • Cistern with flushing facility.
- Squeeze bottle and Hand brush to clean the pedestal



BA-PHALABORWA MUNICIPALITY
MEMORANDUM
- BUDGET AND TREASURY -

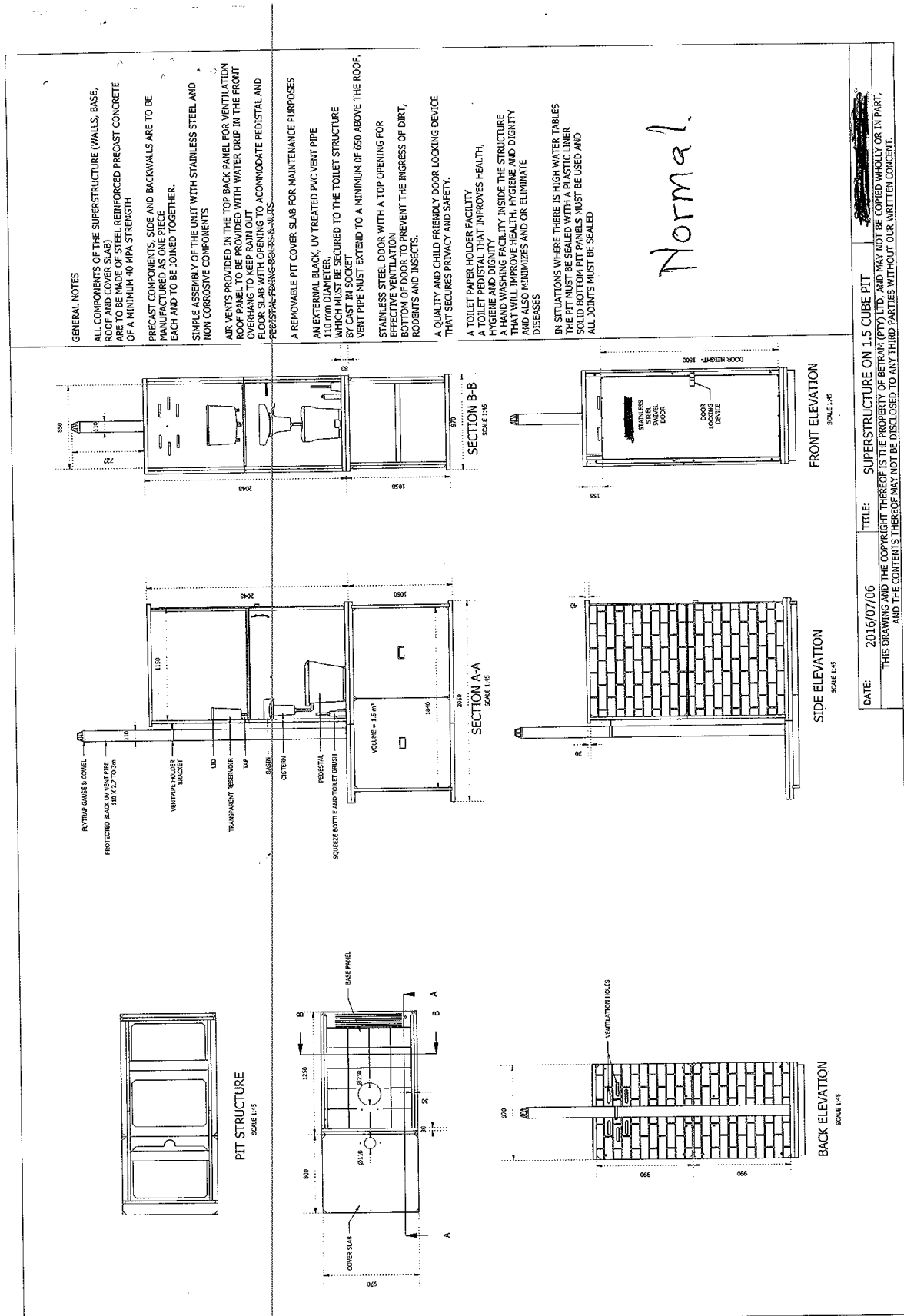




BA-PHALABORWA MUNICIPALITY

MEMORANDUM

- BUDGET AND TREASURY -



DATE: 2016/07/06
 TITLE: SUPERSTRUCTURE ON 1.5 CUBE PIT
 THIS DRAWING AND THE COPYRIGHT THEREOF IS THE PROPERTY OF BETRAM (PTY) LTD. AND MAY NOT BE COPIED WHOLLY OR IN PART, AND THE CONTENTS THEREOF MAY NOT BE DISCLOSED TO ANY THIRD PARTIES WITHOUT OUR WRITTEN CONSENT.



BA-PHALABORWA MUNICIPALITY
MEMORANDUM
- BUDGET AND TREASURY –